

## School Management Services

**Feeling  
challenged  
managing your  
dream school?**



## Probably you want

- **A reputable school, pride of parents**
- **Which will have a lasting legacy**
- **Continuous all round improvement**

**But bogged down  
with administrative,  
accounting &  
compliance  
hassles?**



## Admission Management



- **Applications, on-line or otherwise**

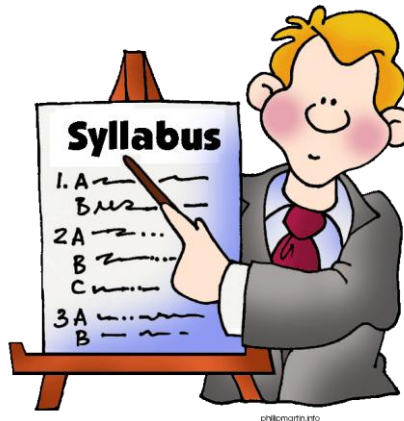
## Student Management

- **Students database**
- **Students Communication**
- **Invoicing**
- **Attendance**



## Curriculum/Syllabus Management

- **Curriculum Items, for both scholastic and co scholastic activities**
- **Map Classes - Class Slots - Faculties**
- **Substitute / Guest Faculty**
- **Class Schedule (allocation of location, faculty & equipments)**
- **Circulate routine / change of routine**



## Communication Management

- With parents
- With teachers
- E-mail, SMS, School Website - integrated approach
- Manage Facebook page with regular posting about event, circulars and forwarding feedback from parents to respective authorities

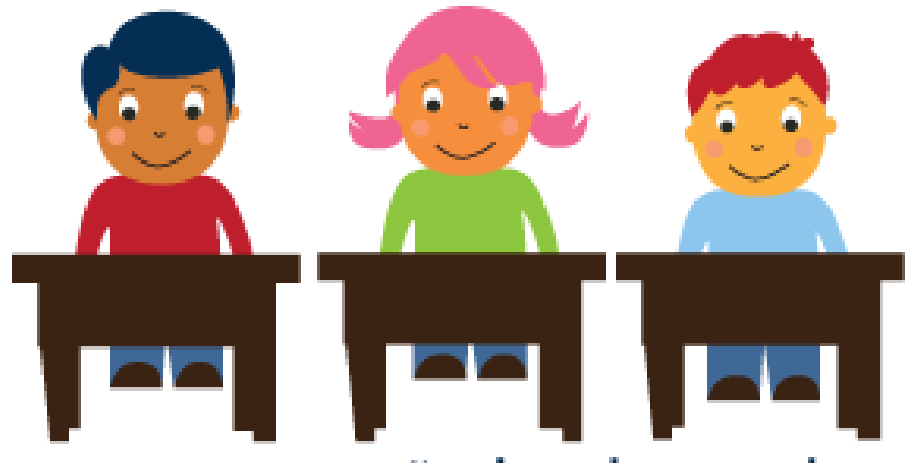


# Fee Management

- Flexible
- Agile
- Fee tracking / Outstanding
- Fee Analysis



## Attendance

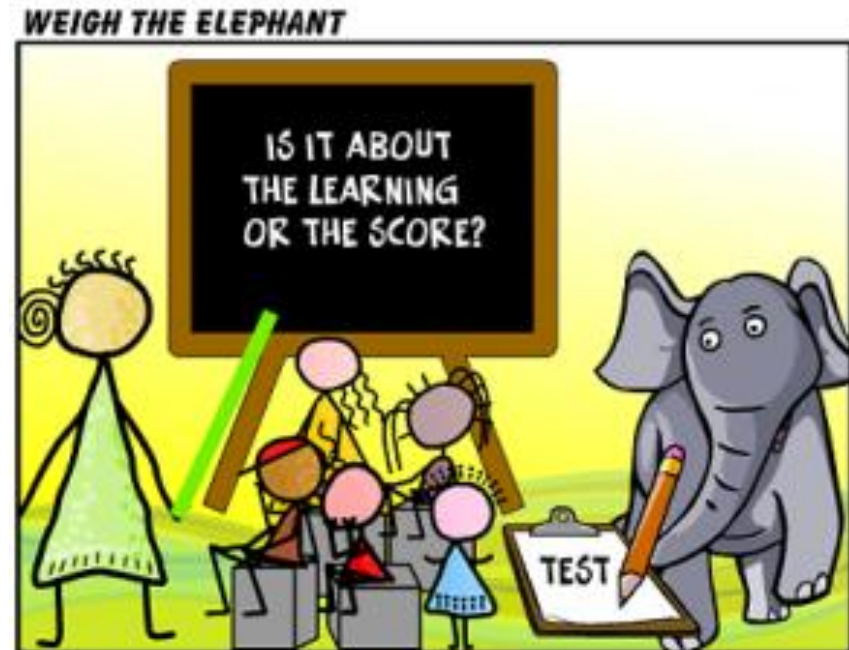


- **Biometrics integration**
- **SMS to parents for absence**
- **Integrate with Payroll of Staff**



## Student Evaluation

- Mark sheet
- Promotion
- Analysis of Results of Internal as well as Board examination



## Faculty Evaluation

- **Performance**
- **Teachers' Learning**
- **Skill Setup**
- **Skills Inventory mapping**
- **Track teaching hours**

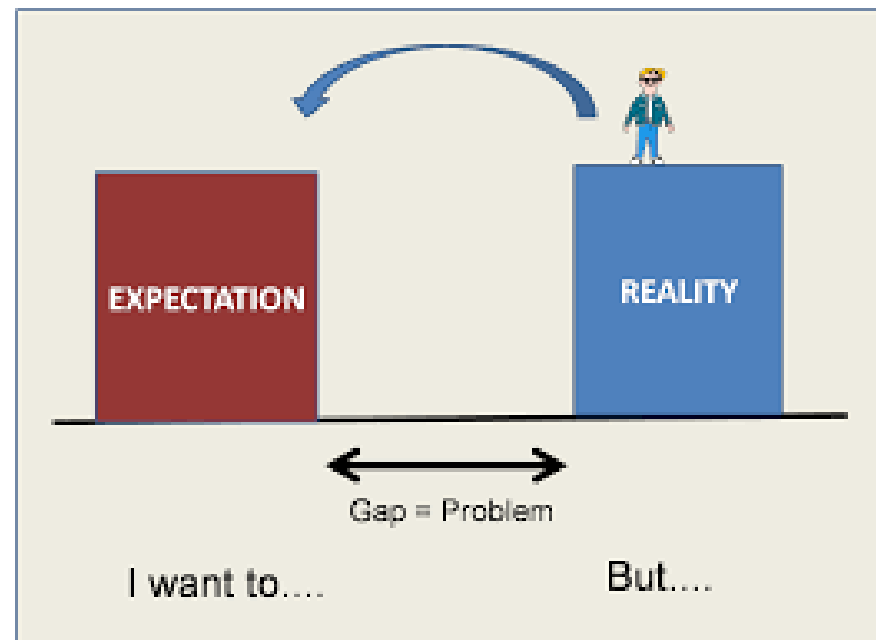


## School Leaving



- **Checking of Dues**
- **TC, Certificates**

## Expectation Management



- **Parent / Student Survey**  
[confidential]
- **Deficiency management**

## Merchandise Management

- **Point of Sale of Tie, Badges, T-Shirts, etc.**
- **Profitability reporting**
- **Place supplier orders and receive shipments**
- **Inventory tracking**



## Student Housing



- **Hostel Enrolment**
- **Caution & Pocket money management**
- **Integrate with accounting**

## Transportation



- **Enrolment**
- **Integrate with accounting**

## **Integrated Accounting** (Built on CORALerp platform)

- **Fee Structure Analysis using Cost Centre approach**
- **Payroll Processing**
- **General Ledger Accounting**
- **Student sub ledgers**
- **Final Accounts**
- **Compliance such as TDS, etc.**





## Alumni Management

- Database management
- Regular communication
- Tracking alumni achievements





## Freedom to achieve

**Essentially, we free you from non-core & administrative activities (at the same time provide you key information) and help you focus on your core activities.**



# THANK YOU!

## anupalan

*Corporate Office:*

A307 Deluxe Centre, 157c Lenin Sarani, Kolkata 700013

*Malda Office:*

SINGHALs, Kalitala Second Lane, Malda 732101

ysinghal6@gmail.com

comply@anupalan.com | [www.anupalan.com](http://www.anupalan.com)



A UNIT of Coral